



POLITECNICO
DI TORINO



ENERGY
CENTER

Understanding island dynamics for a
good start of the energy transition

04/09/2020

The experience of Pantelleria Clean Energy Transition Agenda (CETA)

Riccardo Novo
PhD student @ Energy Center Lab
Polytechnic University of Torino
riccardo.novo@polito.it



List of contents

Island framing

Assembling a
working group

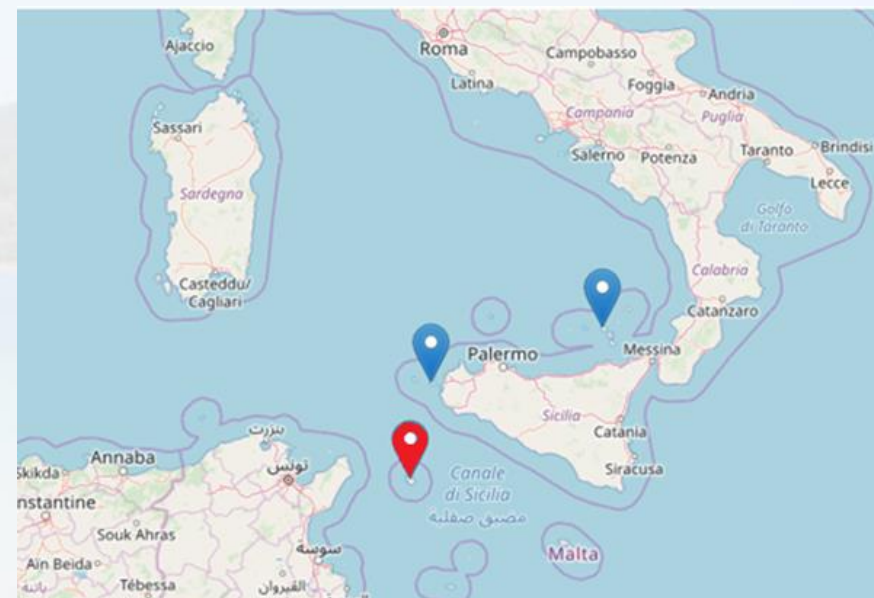
Defining a
common vision
and drafting
the CETA

From the
working group
to the
community

What's going
on now

Pantelleria

- ❑ Located in the middle of the **Strait of Sicily** (110 km off Sicily, 65 km off Tunisia)
- ❑ **7'800 inhabitants** (large summer tourist flows)
- ❑ **85 km²**, three main urban centres
- ❑ Various constraints of landscape and **environmental protection** (including a National Park, ~80% of the island territory)
- ❑ Really **low actual penetration of RES** (<5%), despite a huge availability
- ❑ **High costs for producing electricity** (+500%, but final cost for users is kept the same)
- ❑ +50% cost for **fossil fuels**



Establishing a working group of key stakeholders

- ❑ A **first draft** of the CETA was produced by a working group of local actors and academy
- ❑ The working group **required characteristics** were:
 - **Representativeness of the involved organisations**
 - **Completeness** of the positions wrt. the energy transition process (including the provision of needed energy data)
 - **Availability** of the group members
 - **Stability of members** within the island administration (not only politicians, but also public sector **technicians**)
 - Proactivity and interest of the participants
- ❑ We have not avoided possible opponents
- ❑ The **group leader's tertianship** was a key element for carrying out the work effectively, in order to overcome local contrasts



Pantelleria CETA working group members and their focuses

❑ Municipality

- Lower the final **costs** for the citizens
- Enable distributed **self-production**

❑ National Park:

- Preserve the **environment** and the **landscape** richness
- Promote the **rural development**

❑ Local **DSO**, electricity and water producer:

- Ensure the security of the **electricity supply**
- Guaranteeing the effective **low term balance of the power grid**

❑ Local wine **producers**:

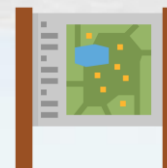
- Create **new business opportunities** based starting from environmental sustainability
- Lower the mobility costs

❑ Social promotion association:

- Ensuring the **active involvement of local citizens**

❑ **Academy**:

- Adopting future energy balances to meet **ambitious decarbonisation targets**
- Enable the testing of **innovative low-impact energy technologies**, alongside the diffusion of consolidated ones



Get into the island dynamics

Social dynamics



- ❑ Learnt from institutional actors
- ❑ We got in touch with **local associations and groups of citizens** to let them know the ongoing process and unofficially discussed their vision on the topic

Economic aspects

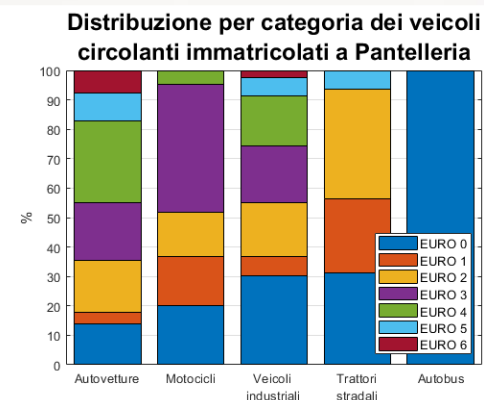
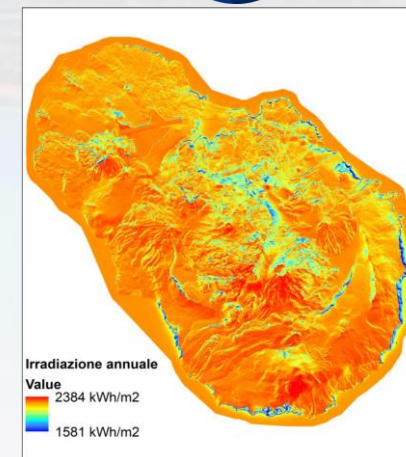


- ❑ Energy-related: **analysis of the cash flows related to energy** (price of energy for final users, national equalization system, etc.)
- ❑ Non-energy related: starting from the working group productive sector members, we met the main associations of **local producers** (wine, caper bushes, etc.) and started understanding their issues, requests and ideas

Energy system



- ❑ Available **energy sources** (time series)
- ❑ **Final consumption vectors and final consumption sectors** (time series when available)
- ❑ **Energy balance** (import/export, distribution, losses)
- ❑ **Technology mix** (energy production and transformation technologies, vehicles, desalters, etc.). Quantification of their **key characteristics**
- ❑ **Carbon emissions** in every transformation step



How to effectively interact in the working group



- ❑ Initial internal **workshop** to understand key stakeholders' **interests, needs and capabilities**
- ❑ A second internal workshop was organised for exposing the **energy analysis**, defining the **vision** on the future of the island and **the realistic targets** to look for.
- ❑ **Communication:**
 - Documents and **official communications** through institutional email addresses
 - **Specific and frequent exchanges** between the working group leader and each member of the working group
 - Taking notes and sharing a **report of each working group meeting**, and underline each member **tasks** for the following weeks/months

Draft the CETA and interact with the working group



- The **CETA** was drafted by a limited number of people, based on the **indications received** from the workshops
- However, **specific contributions** from the working group were given on-demand, trying to actively involve every member on its specific topic
- Especially, a large part of the **pillars** (practical actions for enabling the transition) were proposed by local stakeholders and technicians
- All the members were finally invited to **revise the document**, that would have been publicly presented

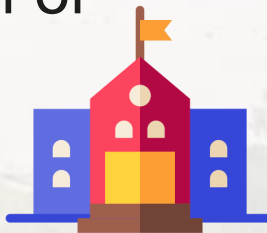
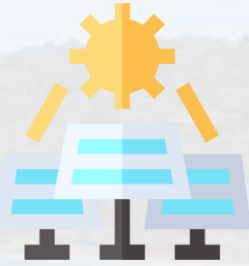
Open the CETA to the entire community: the public meeting

- ❑ A **public meeting** was held in July in the town hall
- ❑ Because of the COVID-19 restrictions, we had to invite participants: **representatives** of associations, political parties, economic sectors, stakeholders in the energy field (e.g. freelance professionals, plant engineering companies). The meeting was also broadcast **online**.
- ❑ **1h presentation of the draft CETA contents**
- ❑ 10 min for the completion of a **questionnaire** on energy needs, and evaluation of the presented draft CETA
- ❑ **Time for everyone** who wanted to publicly speak + time for face-to-face conversations
- ❑ Starting from the following days and up to the 6th September, the **draft document is online for public consultation**



What's going on now?

- ❑ From the public meeting we've learnt that:
 - **The energy topic is of high importance** for the local community. Energy dependence on the continent (equalization mechanism) is seen as a risk factor, while there are **different opinions** about technological solutions
 - **Citizens** are aware that part of the investments will have to come from the private sector, but they ask to be able to **participate in the implementation** of some interventions (public-private partnership with a widespread shareholding?)
 - **More effort is needed to inform end users** about the energy they consume and the impact of all the different energy production technologies
- ❑ We will discuss the requests and proposals received prior to publication of the final CETA version
- ❑ We were contacted by the **regional administration** for exploring the possible practical initiatives for supporting the implementation of the CETA contents



Pantelleria draft CETA and contacts

Draft CETA available @

<http://www.comunepantelleria.it/pantelleria-isola-pioniera/>

Contacts:

agendapantelleriazero@gmail.com

Riccardo Novo

PhD student @ Energy Center Lab

Polytechnic University of Torino

riccardo.novo@polito.it